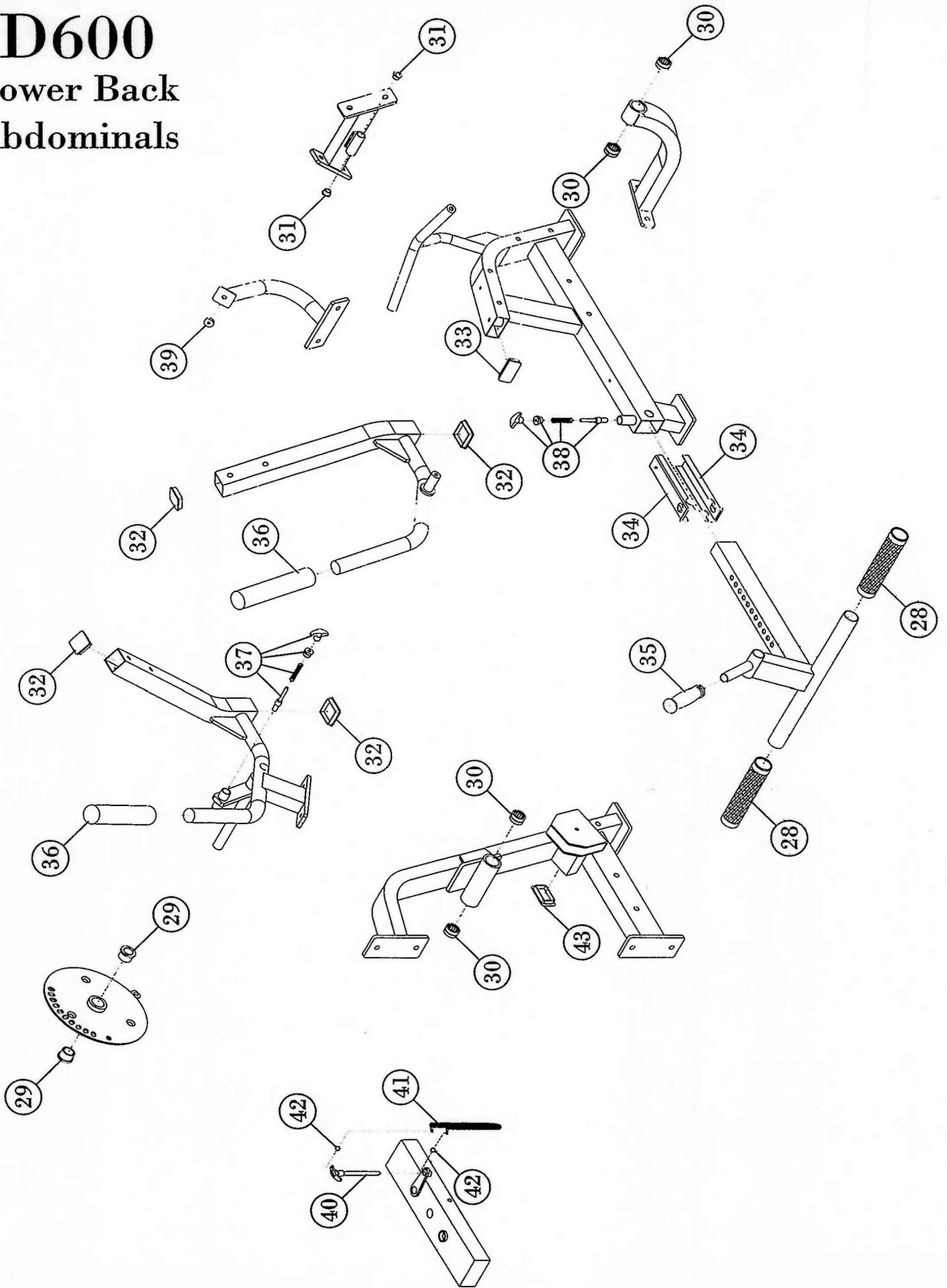


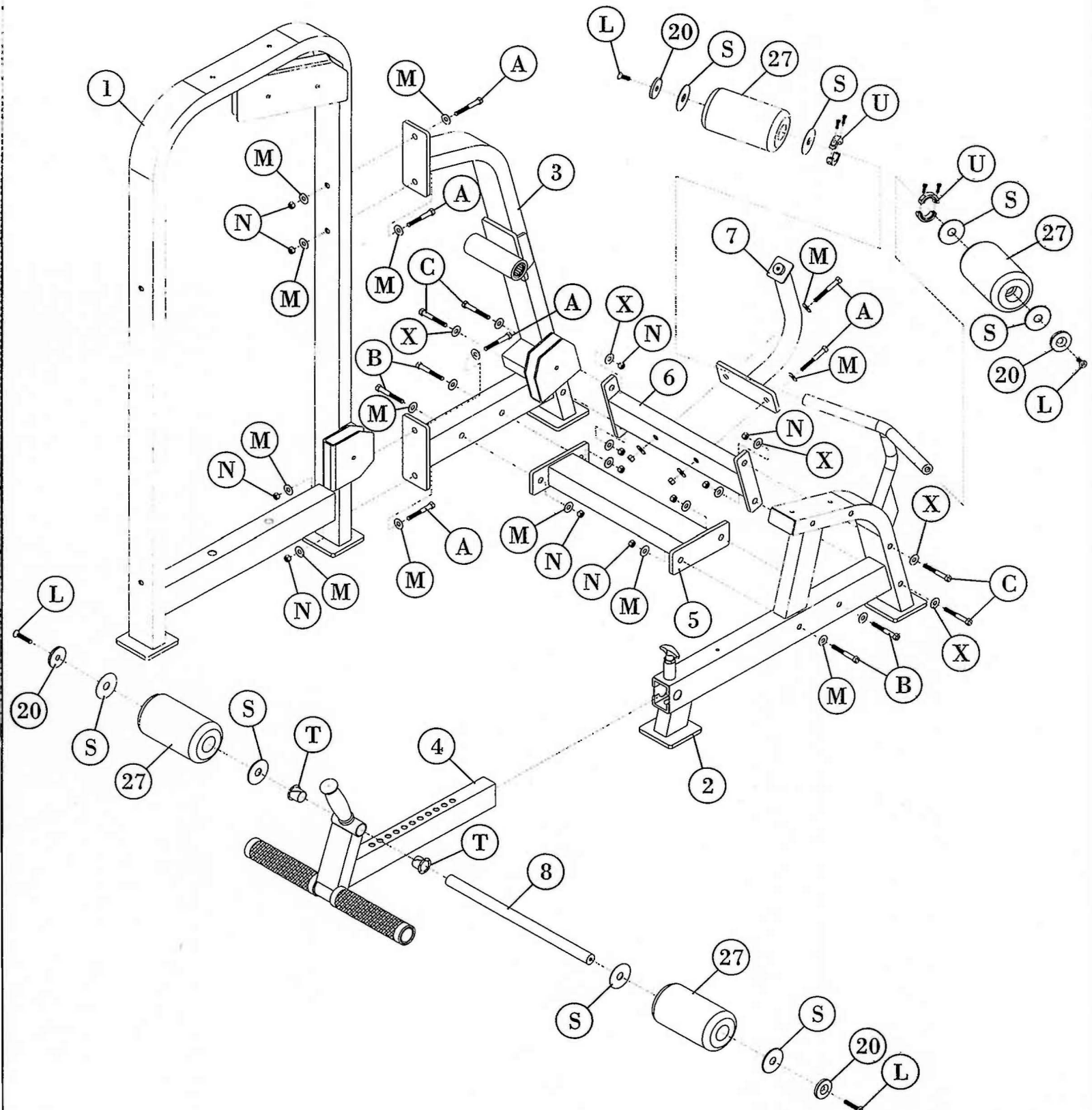
D600

Lower Back Abdominals



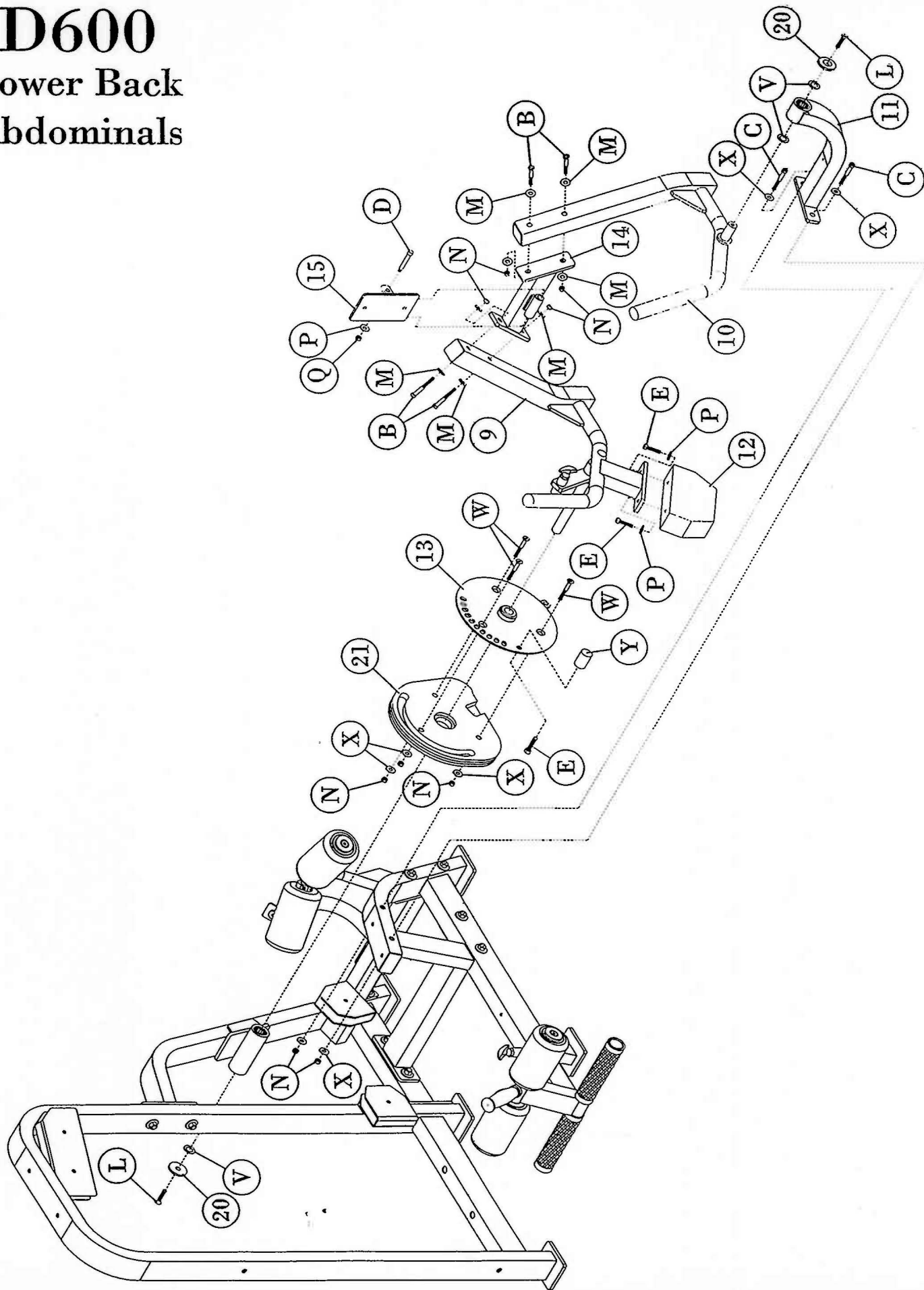
D600

Lower Back Abdominals



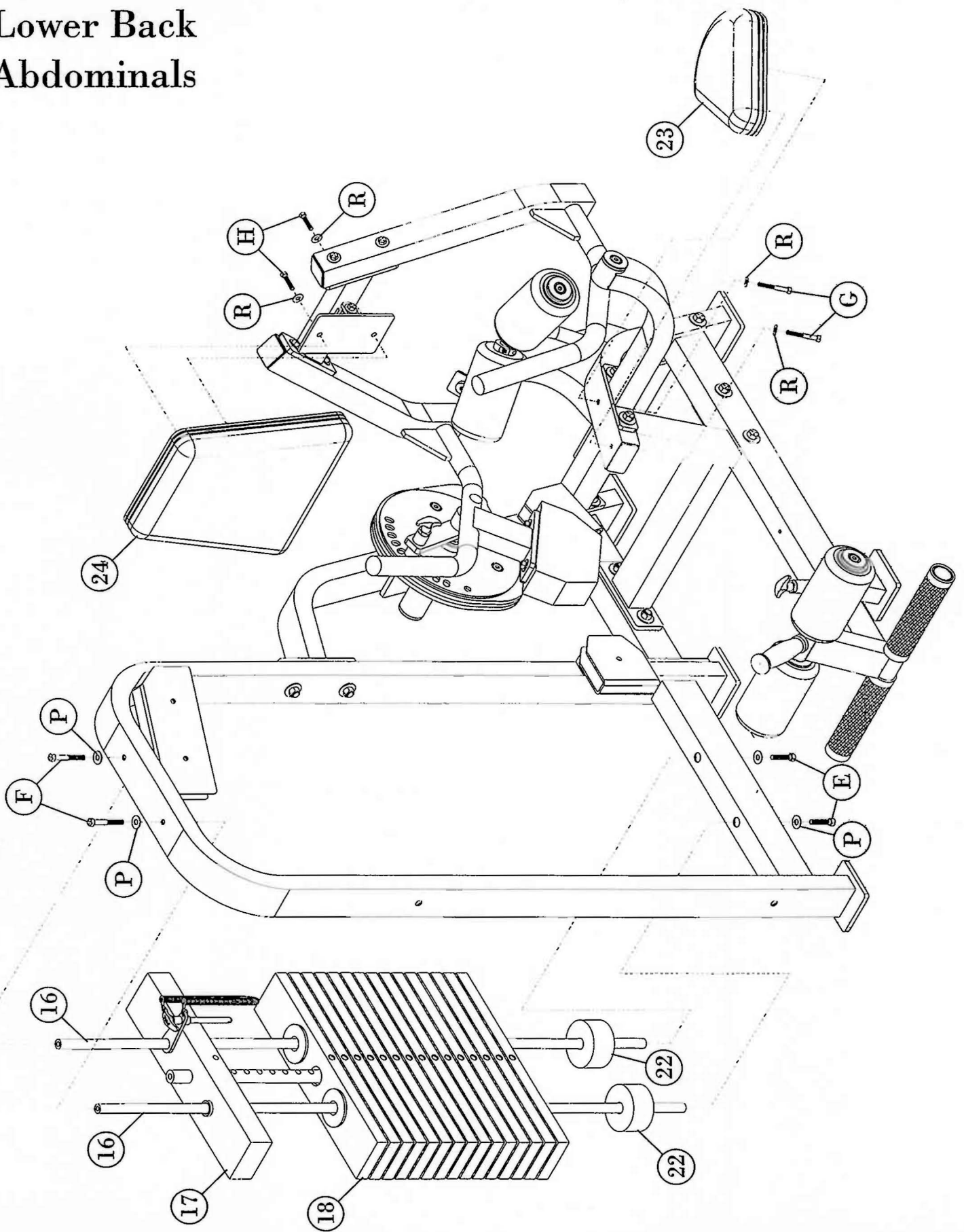
D600

Lower Back Abdominals



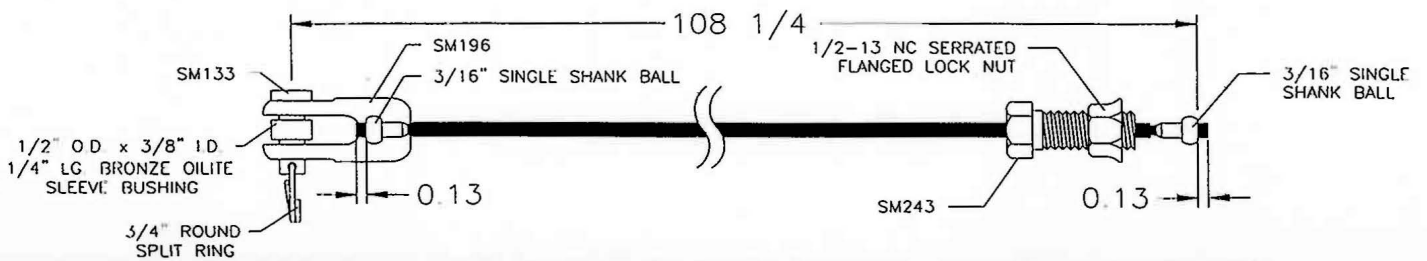
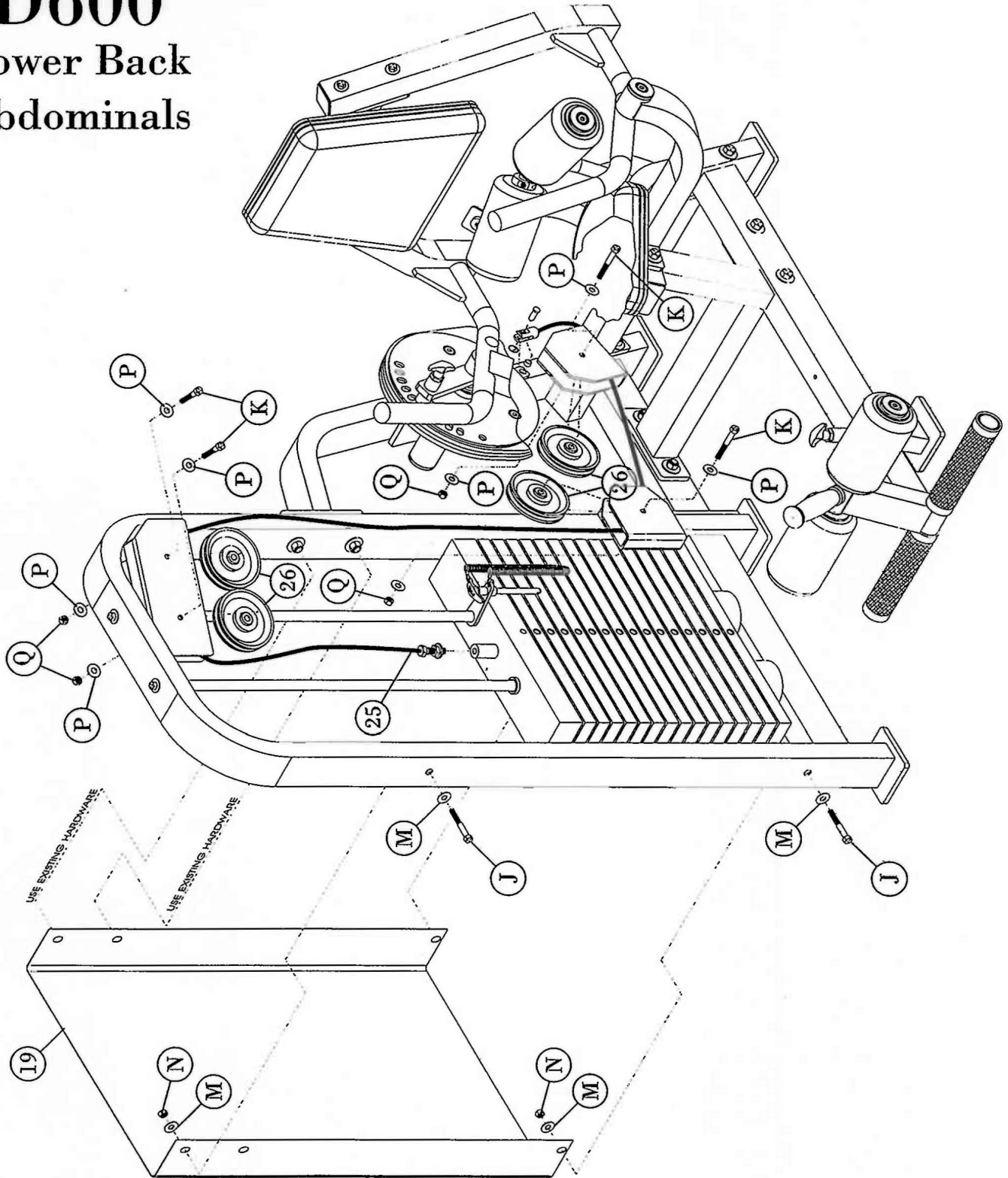
D600

Lower Back Abdominals



D600

Lower Back Abdominals



D600

PARTS LIST

Key No.	Qty.	Part Number	Description
1	1	35-SUB-D600-11	WEIGHTS CAGE ASSEMBLY
2	1	35-SUB-D600-01	SEAT ASSEMBLY
3	1	35-SUB-D600-12	PIVOT MOUNT
4	1	35-SUB-D600-03	FOOTREST ASSEMBLY
5	1	35-SUB-D600-05	LOWER CROSSMEMBER
6	1	35-SUB-D600-06	REAR CROSSMEMBER
7	1	35-SUB-D600-04	ARM STOP
8	1	26-STD-SM254	ROLLER AXLE
9	1	35-SUB-D600-07	RIGHT ARM ASSEMBLY
10	1	35-SUB-D600-08	LEFT ARM ASSEMBLY
11	1	35-SUB-D600-02	OUTSIDE PIVOT ASSEMBLY
12	1	26-STD-SP232	28 LBS. COUNTERWEIGHT
13	1	35-SUB-D600-13	CAM ADJUST PLATE
14	1	35-SUB-D600-09	CROSSMEMBER / ARM ASSEMBLY
15	1	35-SUB-D600-10	BACK PAD MOUNT
16	2	26-STD-SG114	GUIDE ROD
17	1	26-STD-SWTOP8	TOP PLATE AND 16 HOLE STEM
18	15	26-STD-SW104	INTERMEDIATE WEIGHT PLATE, 20 LBS.
19	1	26-STD-SSH147	WEIGHT STACK SHIELD <i>10-STD-SX159</i>
20	6	26-STD-SM238	3/8" FLATHEAD CAP, 2 DIA.
21	1	26-STD-SA106	CAM
22	2	19-WSB-1123	RUBBER WEIGHT STACK BUMPER
23	1	10-STD-SU911A	9" x 11" SHELL PAD
24	1	10-STD-SU1514T	15" x 14" TAPERED PAD
25	1	10-SCA-SC10814	CABLE ASSEMBLY
26	4	18-PUL-412	4 1/2" PULLEY
27	4	10-STD-SUR407B	ROLLER PAD
28	2	26-STD-PLAS128	8 1/2" KNURLED TUBE
29	2	14-TUR-1	TURICITE
30	4	14-BRG-MR16N	BEARING

D600 PARTS LIST

Key No.	Qty.	Part Number	Description
31	2	14-OIL-12F	OILITE
32	4	16-CAP-22	END CAP 2" x 2"
33	1	16-CAP-1123	END CAP 1 1/2" x 3"
34	2	26-STD-PLAS125	E-Z GLIDE SLEEVE
35	1	19-GRP-78514T	TAPERED GRIP
36	2	19-GRP-11218	FOAM GRIP
37	1	26-STD-SM129	PULL PIN (LONG)
38	1	26-STD-SM209	PULL PIN TO CHAIN LINK CONNECTOR
39	1	19-PLG-1	PLUG BUMPER
40	1	26-STD-SM134	WEIGHT STACK PIN
41	1	10-LRD-12	COIL SPRING
42	2	16-RNG-58	SPLIT RING
43	1	16-CAP-112212	END CAP, 1 1/2 x 2 1/2

HARDWARE LIST

Key No.	Qty.	Part Number	Description
A	6	11-HEX-12212	1/2-13 x 2 1/2 HEX BOLT
B	8	11-HEX-123	1/2-13 x 3 HEX BOLT
C	6	11-HEX-124	1/2-13 x 4 HEX BOLT
D	1	11-SHL-12312	1/2-13 x 3 1/2 SHOULDER BOLT
E	5	11-HEX-381	3/8-16 x 1" HEX BOLT
F	2	11-HEX-38212	3/8-16 x 2 1/2 HEX BOLT
G	2	11-HEX-516212	5/16-18 x 2 1/2 HEX BOLT
H	2	11-HEX-516(18)114F	5/16-18 x 1 1/4 FULL THREAD HEX BOLT
J	2	11-HEX-122	1/2-13 x 2 HEX BOLT
K	2	11-HEX-382	3/8-16 x 2 HEX BOLT
L	6	11-FLS-381	3/8-16 x 1 FLATHEAD BOLT
M	38	13-FLT-12	1/2 FLAT WASHER
N	27	12-LOK-12T	1/2-13 THIN LOCK NUT
P	15	13-FLT-38	3/8 FLAT WASHER
Q	5	12-LOK-38	3/8 LOCK NUT
R	4	13-FLT-516	5/16 FLAT WASHER
S	8	13-FND-181212 <i>1825322/2</i>	PLASTIC FLAT WASHER 1 I.D. 2 1/2 O.D.
T	2	14-BRG-NYL1	NYLINER BUSHING
U	2	14-SCC-1	1" SPLIT COLLAR
V	3	14-TBW-34	THRUST WASHER 3/4"
W	3	11-FLS-121	1/2-13 x 1 FLATHEAD BOLT
X	14	13-FLT-12SAE	1/2 SAE FLAT WASHER
Y	1	26-STD-PLAS133	RANGE ADJUST STOP